



6-Series Anti-Fouling Kits

New Materials Prevent Biofouling and Extend Long-term Deployments



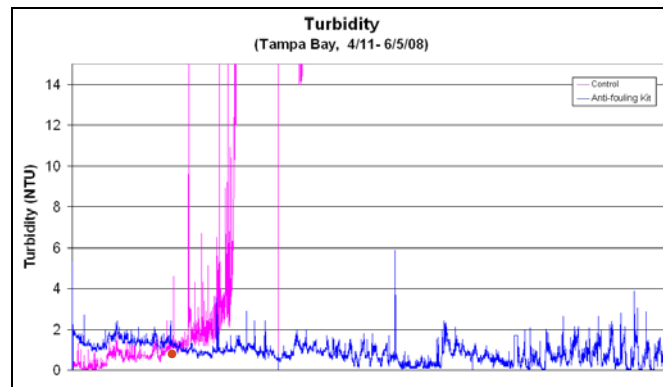
YSI 6600V2-4 sonde after 18 days with anti-fouling kit The sonde was deployed in Tampa Bay, Florida, a very high biofouling environment. The anti-fouling kits significantly slowed the growth of aquatic organisms.



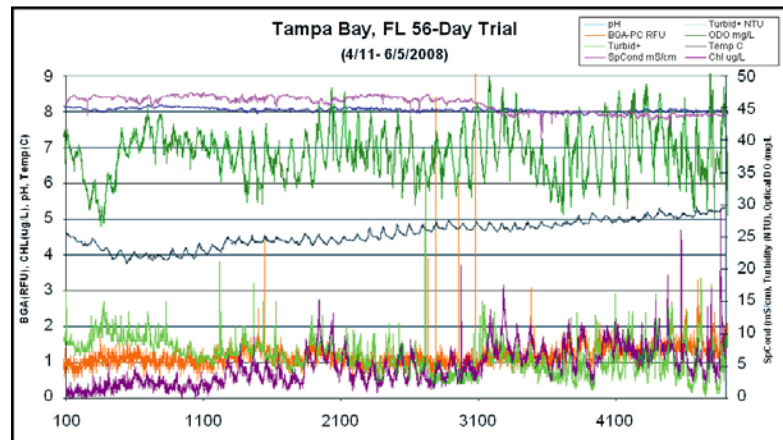
YSI control sonde after 18 days The sonde was deployed in Tampa Bay, Florida, without anti-fouling materials. Biofouling was evident within 10 days and began to compromise data.

Save valuable time and reduce operating costs by extending the deployment period of your YSI water quality sondes with new anti-fouling kits. Kits include components fabricated from copper alloys as well as copper tape and longer, thicker wiper pads. Together, the components add up to a system that can offer major savings for your monitoring program by extending deployment intervals by 3 times or greater—thus significantly reducing trips to the field and the time spent on system maintenance—and providing you with more accurate data collection over a longer period of time.

- More robust wiper assembly cleans all the way to edge of sensor face
- Copper-based parts repel aquatic growth on sensors—offering a more reliable monitoring system
- Extended deployment periods—up to 3x longer—reduce your trips to the field for cleaning and calibration
- Sondes with anti-fouling kits can be deployed for 30+ days without data becoming compromised by biofouling—anti-fouling characteristics have been evident for 90+ days in certain environments



Comparison of standard YSI sonde (control) with anti-fouling sonde in Tampa Bay. After 8 days, turbidity data from the control begin to diverge, indicating the negative effects of biofouling.



56-day deployment of anti-fouling sonde shows strong data integrity.

Pure
Data for a
Healthy
Planet.®



Anti-fouling materials were tested by YSI for two years at nine different sites representing a variety of freshwater and marine environments. In these challenging biofouling conditions, the materials which exhibited the best performance relative to durability and anti-fouling properties were selected for the anti-fouling kits.

To order, or for more information, contact YSI
 +1 937 767 7241
 800 897 4151 (US)
 www.ysi.com

YSI Environmental
 +1 937 767 7241
 Fax +1 937 767 9353
 environmental@ysi.com

YSI Integrated Systems & Services
 +1 508 748 0366
 systems@ysi.com

SonTek/YSI
 +1 858 546 8327
 inquiry@sontek.com

YSI Gulf Coast
 +1 225 753 2650
 gulfcoast@ysi.com

AMJ Environmental
 +1 727 565 2201
 info@amjenviro.com

YSI Hydodata (UK)
 +44 1462 673 581
 europe@ysi.com

YSI Middle East (Bahrain)
 +973 39771055
 halsalem@ysi.com

YSI India
 +91 9891220639
 sham@ysi.com

YSI (Hong Kong) Limited
 +852 2891 8154
 hongkong@ysi.com

YSI (China) Limited
 +86 10 5203 9675
 beijing@ysi-china.com

YSI Nanotech (Japan)
 +81 44 222 0009
 nanotech@ysi.com

YSI Australia
 +61 7 39017223
 acorbett@ysi.com

ISO 9001
 ISO 14001

Yellow Springs, Ohio Facility

Pure Data for a Healthy Planet is a registered trademark of YSI Inc.
 ©2009 YSI Incorporated
 Printed in USA E60-02 0509



Optical probes with copper-alloy housings, nuts, and wiper blocks



Optical probe retrofitted with longer wiper; copper tape around wiper pad, shaft, and probe housing



Copper-alloy sonde guard

How to Order

Category	Item Number	Description
Optical Sensors	616025	YSI Anti-fouling Chlorophyll Probe. Includes probe with copper-alloy housing, lock nut, and wiper kit. Rated to 200 m depth.
	616131	YSI Anti-fouling Blue-green Algae - Phycocyanin Probe. Includes probe with copper-alloy housing, lock nut, and wiper kit. Rated to 200 m depth.
	616132	YSI Anti-fouling Blue-green Algae - Phycoerythrin Probe. Includes probe with copper-alloy housing, lock nut, and wiper kit. Rated to 200 m depth.
	616136	YSI Anti-fouling Turbidity Probe. Includes probe with copper-alloy housing, lock nut, and wiper kit. Rated to 200 m depth.
Wipers for Sensors	616150	YSI Anti-fouling ROX Dissolved Oxygen Probe. Includes probe with copper-alloy housing, lock nut, and wiper kit. Rated to 200 m depth.
	616625*	YSI 6625AF Anti-fouling Wiper Kit for YSI optical sensors.** Includes two wiper assemblies (copper-alloy wiper, larger pad, and setscrew), hex wrench, and instructions. (Does not include sensor.)
	616630*	YSI 6330AF Anti-fouling Wiper/Brush Kit for 6600EDS sonde. Includes two wiper assemblies (copper-alloy wiper/brush assembly, larger pad, and setscrew), hex wrench, and instructions. (Does not include sensor.)
Sonde Guards	616445*	YSI 6445AF Anti-fouling Wiper/Brush Kit for 6600V2-4 sonde. Includes two wiper assemblies (copper-alloy wiper/brush assembly, larger pad, and setscrew), hex wrench, and instructions. (Does not include sensor.)
	616145	Copper-alloy sonde guard for 6600 sondes
	616176	Copper-alloy sonde guard for 6820/6920 sondes
Tape	616175	Copper-alloy sonde guard for 600 sondes
	616189	Roll of anti-fouling copper tape for multiple applications
Port Plugs	616151	Copper-alloy optical probe port plug
	616161	Copper-alloy pH probe port plug
	616171	Copper-alloy ISE probe port plug

* Proper use of the anti-fouling wipers requires the latest version of 6-Series sonde firmware (3.06 or later).

** For a YSI 6600V2-4 sonde with wiped pH/ORP probe, purchase one 616445 wiper/brush assembly plus 616625 wipers for your remaining optical sensors. For a YSI 6600EDS sonde, purchase one 616630 wiper/brush assembly plus 616625 wipers for your remaining optical sensors.

